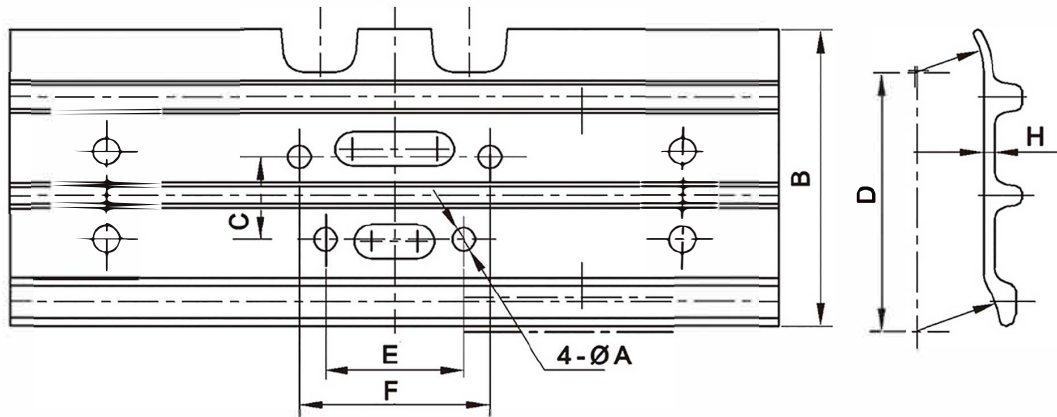
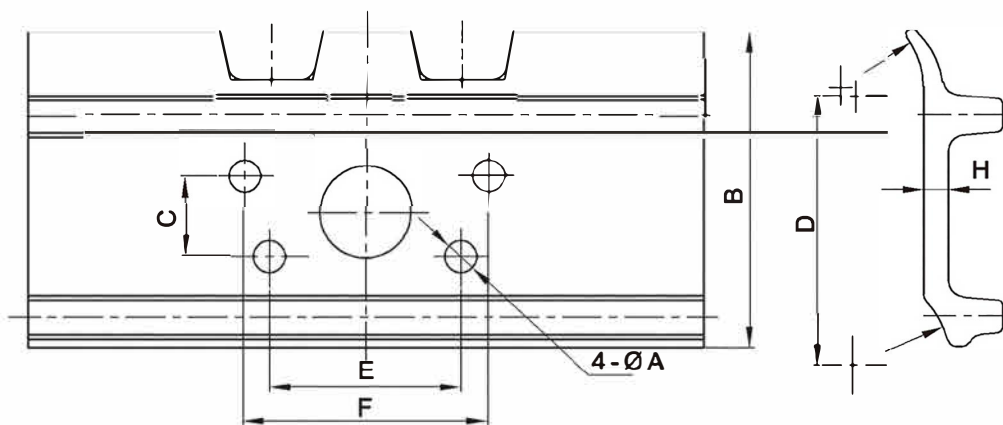


挖掘机履带板参数 EXCAVATOR TRACK SHOE PARAMETERS



Specification	Technical parameters (mm)							Machine model
履带板件号	A	B	C	D	E	F	H	适用机型
W135A	12.5	154	43	135	72	99	6	PC60-3/5 DH55 S50 D20 住友65
W135B	12.5	154	46	135	80	104	6	CAT305 R60 EX40 EX45
W135C	12.5	154	46	135	64	94	6	PC40-7 PC45 PC50-7/8 SK40
W135D	13.5	154	43	135	72	99	6	YC60-6 KY60
W135E	13.5	154	43.4	135	72	99	6	YC35-6 KY50
W135F	13.5	154	46	135	80	104	6	PC40-5 R500
W135G	13.5	154	43	135	72	99	6	S50
W135H	13.5	154	47	135	64	94	6	D4H
W135I	13.5	154	43.4	135	72	99	6	D6H
W135J	13	154	43.4	135	72	99	6	
W154A	14.25	165	57	154	73	89	6/8	PC60-6/7 PC70-6
W154B	14.5	165	57	154	82.4	112.4	6/8	PC120-3
W154C	14.5	165	55	154	90	90	6/8	EX60-1 EX60-2/3 EX60LC-3 EX75UR S70
W160A	14.95	187	56	158	99	99	8	JD955 JD956 FL6
W160B	14.8	187	57	158	88.9	88.9	8	D2
W160C	14.7	187	54	158	98.55	117.6	8	
W171A	18.5	198.9	57	171	122.1	158	8/8.5/9/9.5/10/10.5	HD880
W171B	16.5	198.9	60.3	171	108	108	8/8.5/9/9.5/10/10.6	EX100-1/2/3/5 EX120-1/3 DH120 SK120 DH150 R130 D4E
W171C	16.3	198.9	57	171	86.4	102.4	8/8.5/9/9.5/10/10.9	PC100-5/6 PC120-5/6
W171D	16.5	198.9	58.9	171	125.4	144.5	8/8.5/9/9.5/10/10.11	R200 R210
W171E	18.5	198.9	58.9	171	125.4	144.5	8/8.5/9/9.5/10/10.12	EX200-1

Specification	Technical parameters (mm)							Machine model
履带板件号	A	B	C	D	E	F	H	适用机型
W190A	20.5	219	62	190	124.4	160.4	8/8.5/10	住友S220、DH220、(VOLVO)EC210BLC、PC220-5/6/7、PC220、PC230、DH220、R2252-7、EX200、R220、PC200-5
W190A-3	20.2	219	62	190	124.4	160.4	8.5/10	
W190B	18.5	219	62	190	124.4	160.4	8/8.5/10	EX200-2/5 EX210 PC200-2/3 ZAX230 EX220 PC220
W190C	20.85	219	69	190	119.57	155.57	8/8.5/10	(CA T)E200B EL200B E320C 加腾神钢S.K200 住友200 住友340 S H200 CAT320
W188A	20.5	217.5	62	188	124.4	160.4	10	PC200
W203A	20.5	236	72.2	203	138.4	178.4	236	PC300-1/3-5 DH280 (VOLVO)290 DH320 EX300-3 DH300 DH280
W203B	22.5	236	72.2	203	138.4	178.4	11/13	PC300-5
W203C	21	236	72	203	129	179	11/13	CA T325E325S TS K300
W203D	20.5	236	76.2	203	146.05	184.15	11/13	
W216A	22.8	247/250	76.2	216	140.4	178.4	11/13/14/16	PC360 PC300-6 EX300-5/6 EX350LC-5 PC270-7 ZAX330/350
W216B	22.8	247/250	76.2	216	146	184	11/13/14/16	(VOLVO)EC360BLC PC300HD PC400 EX400 WY160 EX350
W216C	24.6	247/250	76.2	216	146	184	11/13/14/16	EC460 PC400-5 E345
W216D	19.5	247/250	76.2	216	146	184	11/13/14/16	D95S
W216E	22.8	247/250	76.2	216	140	190	11/13/14/16	CA T235-7E330 S K330S K400CA T330
W216F	23.5	247/250	76.2	216	146	184	11/13/14/16	黄河ZY65
W216G	24.5	247/250	76.2	216	149.2	200	11/13/14/16	
W216H	24.6	247/250	76.2	216	144	184	11/13/14/16	PC400-6/7



Specification	Technical parameters (mm)							Machine model
履带板件号	A	B	C	D	E	F	H	适用机型
W101-1F	10.5	109	22	101	55	55	6	PC30 EX35
D216A	24.3	251	76.2	215	146	184	15.5	矿机370 PC400-5
D216B	24.3	251	76.2	215	144	184	15.5	矿机470
D216C	22.5	251	76.2	215	140.4	178.4	15.5	
D216D	23	251	76	215	140	190	15.5	
W260A	31	304	76.2	260	184.1	234.9	21/23.5	S Y550
W260B	30.3	304	76.2	260	184.1	234.9	21/23.5	
W260C	27.5	304	76.2	260	184.1	234.9	21/23.5	S Y460 S H950
W260D	27	304	76.2	260	184.1	234.9	21/23.5	
W260E	34	304	79.5	260	183	265.6	21/23.5	